



# Glasgow Museums: Schools' Programme 2017-18



### **Booking and Cancellling**

**All visits must be booked in advance by calling us on 0141 276 9505/6 or by emailing [museums.schoolbookings@glasgowlife.org.uk](mailto:museums.schoolbookings@glasgowlife.org.uk) If you need to cancel a booking, please contact us by noon the day before, otherwise you will be required to pay the full amount for the session.**

### **Glasgow Museums: Bringing Learning to Life**

Bringing young people to a facilitated workshop in a museum is a very special experience. For many learners, this is where the magic happens and their learning comes to life. Who knows how many future scientists, architects, artists and historians will be inspired?

All of our high quality workshops are designed to extend and enhance classroom learning. Our Learning Team have selected objects from our extensive collections to best meet the needs of learners, providing challenge and enjoyment, and ensuring young people experience depth, personalisation and choice.

### **CPD and Museum Champions**

Glasgow Museums work also with teachers, providing a programme of CPD (see p13) and

‘Excellent! Outstanding delivery, very engaging and pitched at the right level. Completely relevant to our Slavery topic, I would without doubt recommend this to colleagues.’

Secondary 3 Teacher, Lourdes Secondary

co-ordinating an open network of Museums Champions. Museum Champions meet with us three times a year after school, helping shape our learning provision and keeping staff in their schools informed about what’s on offer. In return, the Champions have special access to new exhibitions, class connections buses for new workshops and much more. Museum Champion meetings are advertised on CPD manager for Glasgow Schools.

### **Inclusion and Equalities**

Our Museum Education Officers work in partnership with Glasgow City Council Education Services to ensure all our workshops are inclusive and meet the needs of learners with English as an additional language, as well as those with additional support needs. All of our venues have accessible toilets and lift access. Please let staff know in advance if you require quiet private space.



# Contents

<u>Art and Design</u>	2
<u>History, Modern Studies, RMPS and Citizenship</u>	5
<u>English and Drama</u>	10
<u>Science and Outdoor Learning</u>	11
<u>Wider Achievement Programme</u>	12
<u>Professional Learning Opportunities</u>	13

• Welcome to our programme for  
• secondary schools for 2017–18. Glasgow  
• Museums’ collections are world-  
• renowned and provide an inspiring  
• resource for you and your pupils. We  
• can provide unique experiences which  
• cannot be replicated in class – from  
• walking tours exploring Glasgow’s  
• connection with the slave trade, to  
• critical analysis skills using real artworks  
• or handling artefacts from World War I.

## Mackintosh 2018 Festival

• 2018 is the 150th anniversary of the birth  
• of Glasgow architect, designer and artist  
• Charles Rennie Mackintosh. To celebrate,  
• an exhibition presenting a fresh overview  
• of his influences, work, contemporaries  
• and legacy is being held in Kelvingrove Art  
• Gallery and Museum.

• To coincide with this anniversary, we will be  
• offering a programme of creative workshops  
• and teachers’ CPD sessions throughout  
• 2018. Look out for the logo in this brochure.



# Art and Design

## Critical Journeys in Art

We feel that the best way for learners to develop their skills in discussing and critiquing art is through seeing and exploring real works of art. Our Critical Journeys at GoMA and Kelvingrove Art Gallery and Museum will support your pupils in developing these skills.

### CRITICAL JOURNEYS IN CONTEMPORARY ART at GoMA

Per class: £25 (Glasgow) or £40

Within this session, pupils will:

- become comfortable in the gallery and collect information via different media
- develop skills and the vocabulary to compare and contrast artworks
- explore what materials, ideas, and cultural context has shaped these works
- communicate personal thoughts, feelings and ideas in response to artwork

The learners will produce their own research and ideas sketch book to reflect on back in class. Teachers are encouraged to bring a camera for filming the pupils' responses to artwork

‘... the young people very much enjoyed the tour and presentation – some of them have already said they'll go back to the exhibition to spend more time there. It will make a huge difference to their understanding of the artist and his contribution to design for their Critical Studies.’

Shawlands Academy, Critical Journeys session

‘Working in partnership with Glasgow Museums is exactly the kind of Industry experience the pupils need to complete their qualification.’

Colin Gunning, SQA assessor for Creative Industries

### CRITICAL JOURNEYS IN ART at Kelvingrove Art Gallery and Museum

**Per class: £25 (Glasgow) or £40**

Using Kelvingrove's unique collection as a catalyst, this interactive workshop will develop:

- skills in visual analysis of art works
- analysis of design techniques, processes and concepts
- developing emotional responses to art works
- understanding and effectively using art and design terminology

Popular topics include the French Impressionists, the Scottish Colourists, Abstract Art, Portraiture and Still Life.

Mackintosh 2018 at Kelvingrove Art Gallery and Museum

**April–June only**  
**Per class: £25 (Glasgow) or £40**



This comprehensive exhibition of work by Glasgow's celebrated architect artist and designer provides a fresh overview of his influences, work, contemporaries and legacy. Why not book a tour or practical workshop inspired by the displays?



## Creative Industries

### CREATIVE INDUSTRIES – an insight to the industry at GoMA

National 4 & 5

**Per class: £25 (Glasgow) or £40**

GoMA can support your Creative Industries course both in the classroom and ‘behind the scenes’ in the gallery through this exciting three-part workshop.

**Session 1 at GoMA** – introduction to jobs and roles within a gallery setting and the skills required to fulfil these.

**Session 2 at GoMA** – Learners will gain real life ‘behind the scenes’ insight and carry out vital research for their Creative Industries project. This session is bespoke to the needs and interests of both the pupils and teacher.

**Session 3 at school** – GoMA staff will help your pupils to bring their projects to a conclusion and evaluate their work.



## CREATIVE INDUSTRIES – A TASTER

Are you thinking of offering the Creative Industries course next year, or do you have an existing project that this framework can support? We are happy to work with you to devise a taster programme, delivered over one or two workshops

### Practical Art and Design

**Practical Art and Design at Kelvingrove Art Gallery & Museum**  
National 4 & 5 and Higher

**Per class: £25 (Glasgow) or £40.**

**Whole day session – £45 (Glasgow) or £75**

This workshop will focus on both the research and practical skills required to assist in the development of robust design or expressive units. Pupils will be introduced to and analyze key works in Glasgow Museums’ collection, learning about different techniques employed by artists and designers. Pupils will then use first-hand sources to inform imaginative and original design solutions or to create unique pieces of expressive art.

Practical sessions include:

- Painting from first-hand sources
- Analytical drawing
- Drawing and mark making
- Developing design skills

Popular topics include the French Impressionists, the Scottish Colourists, Portraiture, Still Life, Glasgow Style and Decorative Arts.



### Paper Construction – techniques for design projects

**Kelvingrove Art Gallery & Museum  
National 4 & 5 and Higher**

**Per class: £45 (Glasgow)  
or £75 Full-day session**

Students will study shape and form using our collections to produce simplified designs. These will then be transformed into three-dimensional units and repeat patterns that can be used to develop body adornment, lighting and fashion designs.

### Chair Design

**Kelvin Hall  
National 4 & 5 and Higher  
Per class: £25 (Glasgow)  
or £40**



Did you know chairs are one of the most frequently re-designed products in society? In this workshop, students will have the opportunity to explore chairs from our furniture collection that represent different materials, designs and makers, including a selection of original Charles Rennie Mackintosh chairs. An ideal starting point for a piece of furniture design work.





## RIVERSIDE MUSEUM

### Art, design and technology

S1–6

**Per class: £25 (Glasgow), £40**

Transport is not all about technology and science; it is also about creative design, imagination and aesthetics too. In this practical workshop, learners will have the opportunity to explore materials, ideas and cultural context that has shaped our transport and social history collections. They will discover different technologies used by artists and designers through researching and recording, then share their ideas using various media and materials. Concludes with an opportunity to create their own unique design solutions!

The following medium can be selected:

- Painting
- Printmaking
- Analytical drawing
- Photography
- Ceramic making
- Textile design

## SCOTLAND STREET SCHOOL MUSEUM

**Charles Rennie Mackintosh:  
Working Together, Working Alone**

**National 4 & 5**

**Per class: £25 (Glasgow) or £40**



This session explores the story of Mackintosh and Scotland Street School to inform a critical and practical understanding of individual and collaborative working methods in design projects. Learners will collect information and ideas as they explore this building, taking notes and making sketches along the way. They will also analyze the difference between Glasgow School Board's original brief and the finished school, using historical correspondence and original drawings as evidence. Finally, learners will work individually and collaboratively to design and make models for a piece of Mackintosh-inspired playground furniture for the school's own playground. They will then present their designs, as well as their experiences of working alone and together.



# History, Modern Studies, RMPS and Citizenship

## THE GREAT WAR

‘We loved exploring the objects at GMRC that are normally in glass cases, hearing the stories that were attached to each and that they belonged to someone who had lived through the War. Holding the rifle and bullets made the learning come to life and it’s not just in a textbook.’

Secondary 3 pupils, Bearsden Academy

### The Great War at GMRC Broad General Education S1–3 Per class: £25 (Glasgow) or £40

World War I had a major impact on Scotland, affecting all aspects of life at home and abroad. In addition to a behind-the-scenes tour of objects from the period, this workshop provides an opportunity for pupils to use original source material to start to investigate themes. These include the impact of conscription on one particular family; what a soldier from Glasgow told his son about life in the trenches (and why); how technology and industry were harnessed for the war effort; and how to start to research the history of a war medal.

### The Great War at Kelvingrove: using art as a source of evidence

#### Broad General Education S1–3 Per class: £25 (Glasgow) or £40

Artworks provide excellent stimuli for discussion and writing. This session will encourage students to explore the stories of the people, places and events depicted within our display of WWI artworks and consider the role of artworks as sources of evidence.



Why not make a day of it? Combine the two workshops above to create a whole day integrated social studies and citizenship experience, **£45** for Glasgow schools and **£75** for other Local Authorities

### Coming Sep 2018

#### Brushes with War – WWI soldiers’ art

This evocative exhibition features drawings and paintings created by soldiers in the front line and trenches. Including works from British, French and German soldiers, it shows the commonality of their experiences and a unique first hand account of the war from those involved.

#### Scottish Studies – What is Scottish? Kelvingrove Art Gallery and Museum Broad General Education S1–3 Per class: £25 (Glasgow) or £40

What does it mean to be Scottish? How can we define Scottish culture and heritage? This session supports pupils to explore their own perceptions of Scottish identity today, and in the past. Using museum objects and exploring our Scottish Identity in Art Gallery, pupils will have the opportunity to challenge stereotypes and consider the multi-cultural society we live in today.



## SLAVERY

‘The Glassford Portrait and slavery object handling was excellent and we really enjoyed the Merchant City Walking Tour. Being sent the teacher resource beforehand was really helpful.’

Secondary 2 Teacher, Holyrood Secondary School

### Glasgow’s Hidden Legacies: Slavery past and present at the People’s Palace

#### Broad General Education S1–3

**Per class: £25 (Glasgow) or £40**

By the 1750s, Glasgow dominated Britain’s tobacco and sugar imports. This workshop supports young people to see Glasgow’s historic and current connections to the slave trade. Learners will gain a deeper understanding of slave owners and Glasgow as the second city of the empire, exploring the hidden slave within the Glassford family portrait and handling objects like shackles and golliwogs. Teachers and young people have the opportunity to apply transferable critical thinking skills into investigating the cash crops of cotton, sugar, coffee and tea in the Winter Gardens. Can we be sure that the supply chain involved in what we consume now is free from slavery?



### Slavery and the Merchant City – walking tour resource

This self-led walking tour resource is available for classes who are visiting Glasgow. It helps them to see how the city’s architecture and street names are connected to the Transatlantic Slave Trade and the merchants who made their wealth from it.

### Exploring contemporary issues of slavery at GoMA

#### Broad General Education S1–3

**Per class: £25 (Glasgow) or £40**

Did you know that GoMA was originally built as a townhouse for William Cunninghame, one of Glasgow’s most prominent merchants? This workshop begins by introducing the history of the building and some of our contemporary art that explores issues of slavery in the past and present. Young people will then have the opportunity to respond creatively to the topic of slavery using mixed media

Why not make a day of it? Combine the two workshops and walking tour to create a whole day integrated social studies and citizenship experience, **£45** for Glasgow schools and **£75** for other Local Authorities.

‘I have never thought about where my clothes come from. The badges were a fun idea to show this. I have never seen art like this before, it was really interesting.’

Secondary 2 pupil, Bearsden Academy,  
Contemporary issues of slavery workshop

## WWII AND THE HOLOCAUST

### World War II at Riverside

**Broad General Education S1–3**

**Per class: £25 (Glasgow) or £40**

In this immersive workshop pupils will discuss the impact of World War II on the lives of people involved in the home front and the front line through:

- evaluating various primary and secondary sources (written, oral and visual)
- handling original and replica objects from our collection
- exploring different means of communication through re-enacting different roles, such as a war correspondent, air raid warden and war artist
- reflecting on their experience and presenting their findings back in school

### Exploring the Holocaust at St Mungo's

**Broad General Education S1–3**

**Per class: £25 (Glasgow) or £40**

Through the use of objects and personal stories, this workshop will examine the survival and tragic deaths of Holocaust victims. With group activities including Holocaust object stories, focused investigations and discussion, pupils will deepen their understanding of human rights and build on personal attributes of empathy, respect and openness through this immersive experience.





### Glasgow: A Sectarian City?

**Broad General Education S1–3**

**Per class: £25 (Glasgow) or £40**

This workshop uses handling objects and the collections in our galleries to support 'Scarfed for Life' and other SOS values-based education work in schools. Through exploring sectarian language, reflecting on assumptions and deepening understanding of prejudice and discrimination, learners build on personal attributes of empathy, respect and openness.



### World Religions

**Broad General Education, National 4/5 and Higher**

**Per class: £25 (Glasgow) or £40**

Our team at St Mungo Museum of Religious Life and Art can use their links with local faith communities to build tailored experiences. Think about visiting a place of worship with us followed by a workshop in the Museum. Our magnificent objects can encourage pupils to reflect on their personal values and relationship to wider society. These sessions deepen classroom-based learning through object handling and facilitated discussions. Please contact our Learning Team well in advance of anticipated visits to discuss content.

# English and Drama

## People's Palace: Men Should Weep

**National 5 or Higher**

**Per class: £25 (Glasgow) or £40**

**Maximum class size: 20**

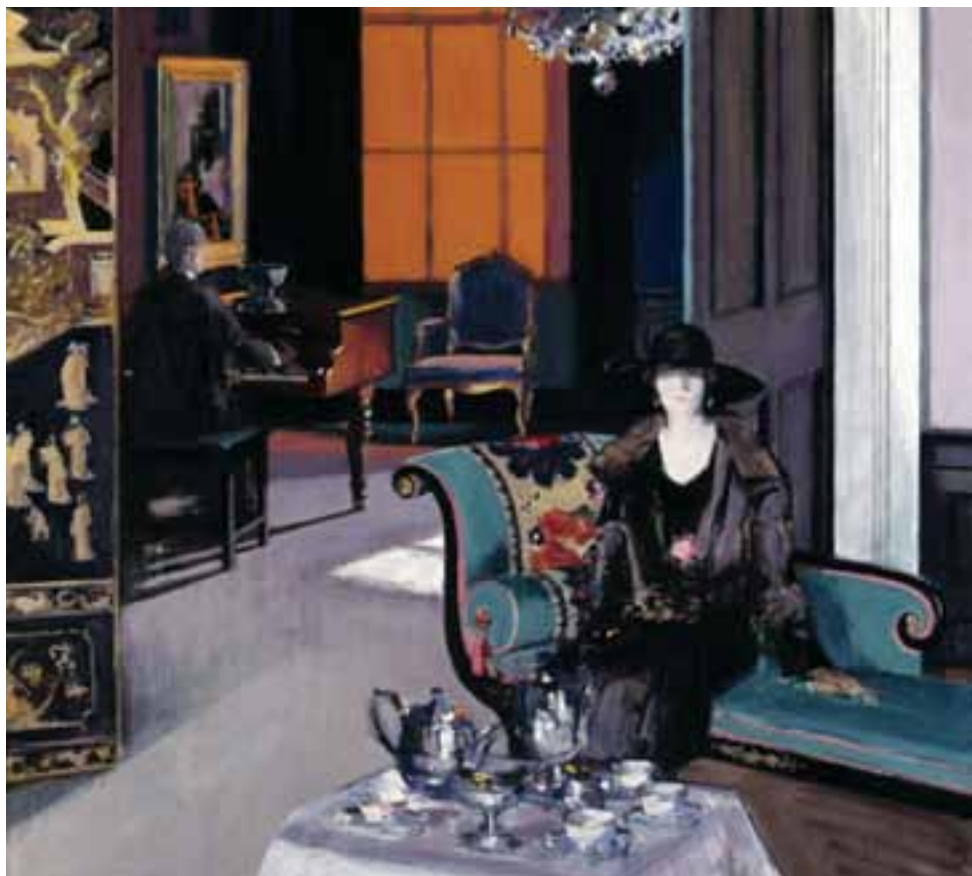
For learners preparing to perform the play *Men Should Weep*, this workshop takes groups on a tour of the People's Palace to find out about life in 1930s' Glasgow. Different stations throughout the museum support specific parts of the play. Scripts will be provided.

## Kelvingrove: Creative Storylines from Visual Art

**Adaptable for all year groups**

**Per class: £25 (Glasgow) or £40**

Seeing real art up close can provide a hugely inspiring starting point for creative writing. Our varied collection of evocative paintings can generate any number of different ideas for context, setting and characters that can then be used in story writing back in school. Learners will explore the paintings through a tour with task-based writing activities.



*Interior – The Orange Blind*, about 1927 by FCB Cadell.

# Outdoor Learning and Science

## RSPB at Kelvingrove

The Royal Society for the Protection of Birds (RSPB) is continuing its successful partnership with Kelvingrove by offering an exciting programme of workshops based outside in Kelvingrove Park. RSPB Scotland is part of the RSPB,

the UK-wide charity working to secure a healthy environment for birds and wildlife, helping to create a better world for us all.

Registered charity: Scotland no. SC037654, England and Wales no. 207076.

## Environmental Science in the Museum and Park **NEW!**

National 4/5, Higher

**Per class: £25 (Glasgow) or £40**

Explore the living environment and interdependence through Kelvingrove Museum's amazing collection and the biodiverse Kelvingrove Park. We will develop an understanding of both international and local environmental issues, and learn some of the ways the RSPB is tackling these. We will practice and develop field skills to enhance students' confidence in problem solving and scientific investigation.

## Nature Explorers

**ASN**

**Per class: FREE**

Come and explore the wonders of Kelvingrove Park in our flexible nature sessions. Available on selected Fridays, please call the RSPB directly to discuss how we can support your class.

## Field Skills

**Third / Fourth Level, Secondary 1–5**

**Per class: £25 (Glasgow) or £40**

Put your field skills into action in the park through invertebrate sampling, plant ID, air quality surveys and water biodiversity measurements.



# Wider Achievement Programme

**Glasgow Museums welcome visits from schools looking for a more informal learning experience – whether it's to support pupils taking part in the XL programme, or groups looking for a summer term reward trip.**

The focus on these visits is on participation and group work whilst providing an introduction to our collections. We can tailor the themes and tasks to suit you group. The following provides an idea of what we can offer:

## **Gallery of Modern Art – Enterprising Design**

Design and make your own badge in this fast-paced, enterprising workshop. Explore contemporary artists' films, paintings, and prints through gallery discussion. The students will make a collection of collaged badges in the studio, featuring some of the motifs, patterns, colours and text they have seen during the session.

## **Kelvingrove Art Gallery & Museum – Arty Games**

A shorter session consisting of fun games inspired by our artwork. These will encourage teamwork, problem solving and creative thinking. No previous art experience required!

## **Kelvingrove Treasure Hunt**

Download our Global Treasure Hunt app then come along to Kelvingrove and work in teams to solve the clues. Discover amazing objects and artworks along the way. This session requires access to one smart phone or iPad per group. We can provide four iPads for small groups to borrow.

Please let us know if your group is working towards a Dynamic Youth or Youth Achievement Award. We can tailor activities to ensure they support the challenges and targets you are working towards.



# Professional Learning for Teachers

Our CPD sessions are £10 for Glasgow teachers and £15 for teachers from other local authorities. Glasgow teachers should book on CPD manager. All other teachers should book by calling 0141 276 9505 / 9506 or emailing [museums.schoolbookings@glasgowlife.org.uk](mailto:museums.schoolbookings@glasgowlife.org.uk)

Additional sessions and opportunities may be added during the course of the year. If you have booked a session but can no longer attend, please cancel your place, otherwise your school may be charged.

<b>27 Sep*</b>	E-resources for Local History studies – exploring online maps and archive photographs and film footage for social subjects (in partnership with National Library of Scotland)	Kelvin Hall – in partnership with the National Library of Scotland’s Moving Image Archive	Social Subjects
<b>11 Oct</b>	Environmental Science – using Kelvingrove Park and museum exhibits to put global and local environmental issues into context with practical activities	Kelvingrove Museum and Park – in partnership with RSPB Scotland	Biology / Geography
<b>26 Oct</b>	Travelling Communities – explore best practice in recognizing and responding to racist incidents within the school environment through practical activities and chance to explore Glasgow’s Showpeople heritage. In Partnership with Show Racism the Red Card	Riverside Museum	Social Subjects
<b>6 &amp; 13 Dec</b> (two-part session)	Critical Studies in Art and Design: using Glasgow Museums’ collections to support exam preparation	Part 1: Kelvingrove Art Gallery and Museum Part 2: Glasgow Museums Resource Centre	Art and Design
<b>8 Mar</b>	Holocaust – exploring the topic through museum objects, artworks and survivors’ stories	St Mungo Museum	RMPS; Social Subjects
<b>21 Mar*</b>	Development of Animation and Cinema Technology	Kelvin Hall – in partnership with the National Library of Scotland’s Moving Image Archive	English; Art and Design
<b>26 Apr</b>	Slavery – exploring Glasgow’s connection to the transatlantic slave trade; includes Merchant City walk	People’s Palace	Social Subjects
<b>25 Apr &amp; 2 May</b>	So you think you know Mackintosh? Delve deeper into the stories behind Charles Rennie Mackintosh’s art, designs and architecture through this informative two-part tour	Part 1: Kelvingrove Part 2: Scotland St School Museum	Art and Design

### **School Partnerships**

We welcome opportunities to build relationships with our local schools. Please get in touch if you'd like to explore this further with your local museum.

### **Explore our collections online**

Our newly updated Collections Navigator online database will be launched in the Autumn. This will provide the facility to search our extensive collections records providing images and further information on your chosen objects. A dedicated section for teachers will provide pre-prepared groups relating to our key topics featured in this brochure. An ideal resource to use back in school.

### **Risk Assessments**

All Glasgow Museums' venues and the activities that take place within them have been risk assessed. The risk assessment documentation cannot be emailed out but copies are located on site, and if required, can be made available for inspection. Please note the assessments are not for individual workshops, but for the types of activities delivered by our Learning Team.

### **Continuous Professional Development for Teachers**

Look on the back inside page of this booklet for details of our CPD programme covering Art and Design, Social Subjects, Science and RMPS.

